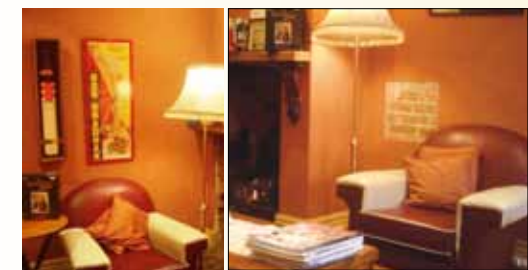


Historic Cottages

Choose from 5 beautifully restored heritage-listed, separate self-contained stone cottages. Enjoy spa suites, ortwo & three bedroom cottages with modern, fully-equipped kitchens, private courtyards, gardens or open fires.



Sitting Room with Sir Donald Bradman Theme



Classical symmetrical Cottage



Chapel Cottage



Stanley Cottage Streetscape



Romantic Bedroom

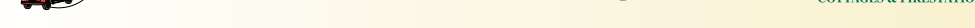
- Choice of continental, european or english breakfast provisions
- Dual room service menus
- Adelaide's best romantic packages
- Double spa baths
- 4.5 & 5 star
- Central heating/air conditioning
- BBQs available
- Children and families welcome

North Adelaide Heritage Group

Solely Owned and Hosted by Rodney, Regina & William Twiss, North Adelaide, South Australia

Ph/Fax: +61 8 8267 2020 res@adelaideheritage.com

www.adelaideheritage.com



Cafe Suite

A cosy early settlers cottage with a Tuscan ambience with a beautiful antique nickel plated queen bed, king spa, galley kitchen with a Sir Donald Bradman Cricket theme including signed bat • Open log fire • Underfloor heating

Sussex Cottage
A sweet German settlers cottage of three bedrooms with a queen and two single beds, and new 30sq. metre Loft with king singles (option for king bed) steeped roof line, paned glass windows and a picket fence.
• Large private secluded landscaped courtyard garden

Chapel Cottage
A sandstone cottage, tucked away in a small historic side street just steps from the O'Connell Restaurant precinct. Complete with a drawing room, two bedrooms, both with queen beds, claw and leg cast bath and country kitchen which looks out to a paved slate courtyard.
• Offstreet parking for 2 cars

Stanley Cottage
Two bedrooms, the master with a queen and a mezzanine with a double bed. The open plan parquetry floored living room is angled beautifully for the Northern sun to the secluded vine dappled patio.
• Private parking
• Outside dining facilities

Champagne Suite
A private suite ideally located on Melbourne street, renowned for its restaurants with Tuscan washed walls, queen bed, king size spa, galley kitchen overlooking a private courtyard.
• Metres to restaurants
• Underfloor heating
• Outside dining facilities

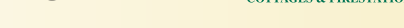
- Old fashioned hospitality
- Steps from Adelaide's best cafés & restaurants, supermarkets & shops
- Complimentary shuttle bus available 7 days a week
- Personalised friendly service
- Beautifully furnished with Australian antiques
- Only the finest quality products and linen used
- Tour desk in each property

North Adelaide Heritage Group

Solely Owned and Hosted by Rodney, Regina & William Twiss, North Adelaide, South Australia

Ph/Fax: +61 8 8267 2020 res@adelaideheritage.com

www.adelaideheritage.com



Cafe Spa Suite bedroom



Large living area



Comfortable sitting rooms



Stanley Mews Cottage Master Bedroom



North Adelaide Heritage Group

EST 1989

"It's worth coming all the way to Adelaide just for the experience of staying in one of these out-of-this-world apartments, cottages and suites." **Frommers Guide to Australia 2012**

North Adelaide Heritage Group is Fodor's choice of accommodation for Adelaide.
"Tucked away in the city's leafy historic quarters, these 20 extraordinary properties offer guests the chance to stay in a place that will exceed their every expectation. Antiques dealers Rodney and Regina Twiss have converted State Heritage-listed cottages, mews and a manor house into apartments and suites, and filled them with a mix of Australian antiques and contemporary furnishings." **Fodor's 2012 Guide for Australia**

Exclusive Properties****

For the discerning, three 5 star exclusive & spacious properties, Bishops Garden, Residency Penthouse at the Fire Station Inn & the Dover Castle Terrace House, situated in superior dress circle locations in North Adelaide.



Bishop's Garden c.1899



Fire Station Inn c.1866



Dover Castle Terrace House c.2005



Bishop's Garden, living room with garden aspect



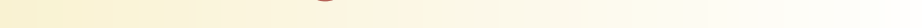
Penthouse living room towards sun deck



Exclusive Spa

Bishop's Garden

"The stunning Bishop's Garden apartment is the most luxurious and secluded spot in Adelaide with a lush private garden complete with rock-adorned fish pool." **Fodor's 2012 Guide for Australia**
• Foxtel Cable TV
• Complimentary Wireless broadband
• King spa • Ducted air
• Gated private garden with lawns



The Residency Penthouse Suite at the Fire Station Inn

Stunning in its expansive outlook and interior design. The Penthouse suite has a 7 metre (21 feet) sun deck, 2 glorious bedrooms, an ultra-modern West Australian Red Jarrah kitchen, Juliette balconies, squashy leather sofas and a toasty gas log fire.

Dover Castle Terrace House the 21st Century

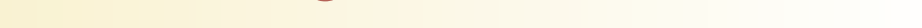
Your own Luxury Exclusive Terrace House in Adelaide's most prestigious city precinct.
• Designer kitchen
• 4 bedrooms • King spa
• Underfloor heating
Ducted Air • Balcony
• 2 car garage
• Foxtel • Broadband
• All properties have designer outside dining

North Adelaide Heritage Group

Solely Owned and Hosted by Rodney, Regina & William Twiss, North Adelaide, South Australia

Ph/Fax: +61 8 8267 2020 res@adelaideheritage.com

www.adelaideheritage.com



Unique SPA Luxury Properties

North Adelaide Heritage Group's unique properties offer a range of luxury apartments featuring the famous **Fire Station Inn** with 2 separate spa suites; all located in the popular cosmopolitan café and restaurant precinct of the Adelaide city centre – Historic North Adelaide. All properties in this category feature beautiful king spa bathrooms.



Fire Engine Suite iconic view

Fire Station Inn C1866 Fire Engine Suite

Indulge in the world-famous unique Fire Engine Suite with its unforgettable 1942 International Fire Truck, red fire Pole and Fireman lights.

- King spa • King bed
- Double sofa bed
- Underfloor heating
- Fire Station Memorabilia



Fire Engine Suite open plan



Spacious, sun-lit spa bathroom

Fire Station Inn Loggia Suite

"Romeo and Juliet"

A very private retreat with Italianate accents, comprising of a Queen bedroom, spa bathroom of luxurious proportions and private walled Tuscan courtyard.

- Private secure parking
- Flat TV, DVD
- Intercom access



Loggia intimate, sumptuous bedroom



Vaulted Friendly Meeting Chapel

Friendly Meeting Chapel
Sumptuous vaulted ceiling with exotic furnishings with a spacious open plan layout. A uniquely Romantic experience.

- Ducted Air
- All Brass Queen bed
- King spa
- Directly across from the trendy Ruby Red Flamingo Restaurant
- Metres from Scuzzi Cafe



Cafe Spa Suite

Melbourne Street Mews C1846

"Ultimate accommodation for two couples travelling together!"

- 2 ensuite marble-tiled spa bathrooms • 2 Queen bedrooms
- Private slate paved courtyard
- Cosy sitting room with open log fire
- 2 galley kitchens
- Metres from restaurants
- Covered pergola with dining setting



Townhouse set in leafy discreet precinct

William Townhouse C1984

Built under architectural supervision, it offers a contemporary 2 storey townhouse of 3 bedrooms & 2 bathrooms incl. spa, well designed living room with large LCDTV • DVD

- Foxtel Cable • Weber BBQ
- Wireless Broadband
- Undercover parking
- Large private landscaped courtyard
- Dual Room service menus
- Outside dining setting



Melbourne Street Mews



Full kitchen with dining room

Unique Luxury Property

Buxton Manor



A stunning 1909 restored Country Manor on half a city acre of surrounding gardens. Includes four separate, lavish self-contained spacious suites. The Arts and Crafts Historic Mansion offers 1, 2, or 3 bedroom spacious apartments. "Each one to three bedroom unit has a bath or spa, sitting room and kitchen and the elegant rooms and impeccably manicured grounds rival the most gracious English country house for style and charm." **Fodor's 2012 Guide for Australia.**



Buxton Manor Estate c.1909



George Lowe Esq. spacious formal sitting room

George Lowe Esquire

Is a lavish, spacious, luxurious Manor apartment with two bedrooms, kitchen, drawing room & entrance foyer with a queen, two single beds, high marbled ceilings, polished floors and valuable Victorian antiques, overlooking the sunken rose garden. 1582sq ft/147sqm.

Musica Viva

Has an atmospheric drawing room reminiscent of a gentleman's games room. The most romantic master bedroom has a unique king size canopied half testa & porcelain antique bed & beautiful, Victorian Huon Pine dressing table and chest. 1420sqft/122sqm.

The Butlers

Gentleman's drawing room, 2 master bedrooms, breezeway sun room with well chosen eclectic furniture and effects. 1668sqft/155sqm.

Garden & Loft

A large, spacious two storey apartment, 3 bedrooms, overlooking the rear gardens, extremely well equipped for the extended family. 1818sqft/164sqm.

Paprika Cottage

Arts and craft cottage, tucked into the garden of Buxton Manor, vaulted exposed Oregon rafters, spa, 1 QS bedroom. 818sqft/76sqm.



Magnificent bedrooms



Romantic bedrooms for honeymooners



Musica Viva opulent gracious drawing room



Musica Viva Bedroom



Garden & Loft lounge overlooking garden



Some of the extensive Buxton Manor lawns and gardens

- One of the largest gardens in the city
- Most spacious suites in Adelaide
- Complimentary Parking
- Short stroll to Adelaide's best restaurants

- Wireless broadband
- Open fireplaces
- BBQ's
- Outside designer furniture

- Self contained apartments with external entrances
- Sweeping lawns and rose gardens
- Complimentary laundry facilities
- Free solar city connector bus